



PM-200 – The Power to Log

The all-in-one data logger for the entire vehicle networking



Key Benefits

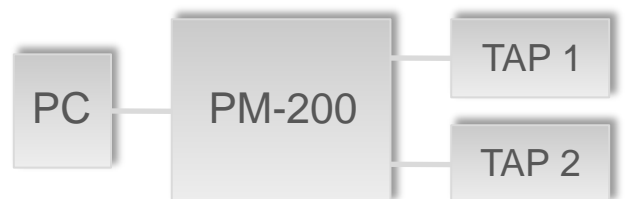
- ✓ Comprehensive data logging with central time stamp (1 μ s) and 120 MB/s data speed
- ✓ Replaceable SSD
- ✓ Extensive interfaces
- ✓ Flexible upgrades
- ✓ Efficient power management (sleep mode up to 100 μ A)
- ✓ Freely programmable using C/C++
- ✓ Live data visualization (optional)

The PM-200 sets the bar considerably higher on the topic of safeguarding and troubleshooting vehicles. Bus systems such as CAN, CAN-FD, FlexRay™, LIN, MOST150 and Automotive Ethernet are logged at a data speed up of to 120 MB/s. SSD removable media allow for quick evaluation and distribution of the data. Various upgrade options enable configuration for any application. Flexibility, programmability and support from debugging protocols make it possible to meet the high demands of functionality and fleet tests as well as of test runs.

Highlights

- ✓ SSDs in durable clip-on frames make handling large amounts of data a breeze, especially for fleets
- ✓ Flexible upgrades via modular design: up to an additional 6 x Gigabits and 24 x BroadR-Reach Ethernet ports by connecting 2 Ethernet expansion modules (PT-15B)
- ✓ Fast data interfaces (ePCIe and USB 3.0) to exchange data, device coupling and external storage media
- ✓ Implement individual functions using Eclipse IDE (C/C++) and extensive API
- ✓ Logs from IP video cameras (optional)

- ✓ Open data format for evaluation purposes on numerous applications



Data Visualization via WLAN

- ✓ Freely configurable, real-time presentation of signals while logging

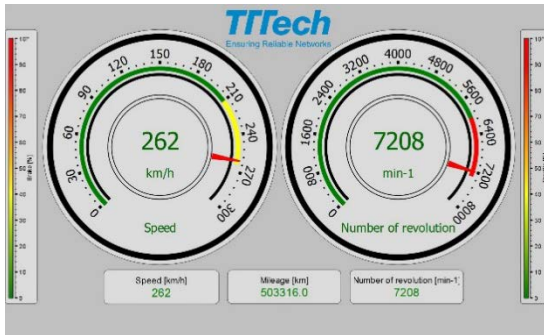


Areas of Application

- Vehicle validation
- Functional tests
- System tests

Data Visualization via WLAN

- ✔ Freely configurable, real-time presentation of signals while logging
- ✔ Support for Windows, iOS & Android
- ✔ Data transfer over optional WiFi module



Filter, Trigger, Classing Functions

- ✔ Parallel to optional “get-it-all” logging, based on signal or bus
- ✔ Logging and analysis for CAN, FlexRay, LIN, and Ethernet interfaces as well as for analog and digital inputs
- ✔ Trip recorder functions for periodic and results-based data logging
- ✔ Automatic and conditional data logging via defined trigger conditions
- ✔ Statistical data analysis with global (persistent) and measurement-related data in 3 dimensions available

PC Interfaces	<ul style="list-style-type: none"> ✔ 1 x USB 2.0 High Speed / Master ✔ 1 x USB 3.0 Super Speed / Master (can be used as logging medium) ✔ Ethernet (10/100/1000 MBit/s) for quick data transmission to PC ✔ ePCIe 2.0 x1 																														
Vehicle Interfaces	<ul style="list-style-type: none"> ✔ 12 x CAN (high speed) ✔ Optional upgrade with 12 x CAN-FD ✔ 3 x FlexRay (channels A/B synchronous and asynchronous respectively) ✔ 12 x LIN ✔ Optional 1 x MOST150, SPY mode ✔ 15 x analog inputs (12 Bit) ✔ 15 x digital inputs (interruptible) ✔ 6 x RS232 ✔ 6 x digital outputs + 3 x analog outputs ✔ 2 x Ethernet 1000 MBit/s with hardware time stamp of 1µs 																														
Operating Temperature	-40°C to +70°C																														
Power Use	1.7A (operating) up to 100 µA (sleep modus) (tentative)																														
Operating Voltage	6 V to 32 V (protects against outage due to strain)																														
Dimensions	200 x 280 x 80 mm (L x B x H, height tentative)																														
Weight	3.2 kg (tentative)																														
Order Numbers	<table style="width: 100%; border-collapse: collapse;"> <tr> <td>PM-200 Enhanced</td> <td style="text-align: right;">13164</td> </tr> <tr> <td>PS-0S Enhanced</td> <td style="text-align: right;">13165</td> </tr> <tr> <td>PS-1000SC Enhanced</td> <td style="text-align: right;">13169</td> </tr> <tr> <td>PS-128SI Enhanced</td> <td style="text-align: right;">13467</td> </tr> <tr> <td>PS-512SI Enhanced</td> <td style="text-align: right;">13166</td> </tr> <tr> <td>PT-15B BroadR-Reach Ethernet Upgrade</td> <td style="text-align: right;">12761</td> </tr> <tr> <td>Option MOST</td> <td style="text-align: right;">12813</td> </tr> <tr> <td>Option +12CAN-FD incl. acknowledgement</td> <td style="text-align: right;">12811</td> </tr> <tr> <td>Option Visualization incl. WLAN</td> <td style="text-align: right;">12810</td> </tr> <tr> <td>Option Extended Protocols</td> <td style="text-align: right;">12814</td> </tr> <tr> <td>Option Filter, Trigger, Classing</td> <td style="text-align: right;">12815</td> </tr> <tr> <td>Option GPS</td> <td style="text-align: right;">12833</td> </tr> <tr> <td>Option Video</td> <td style="text-align: right;">12832</td> </tr> <tr> <td>Option Audio</td> <td style="text-align: right;">12834</td> </tr> <tr> <td>Option Remote Control</td> <td></td> </tr> </table>	PM-200 Enhanced	13164	PS-0S Enhanced	13165	PS-1000SC Enhanced	13169	PS-128SI Enhanced	13467	PS-512SI Enhanced	13166	PT-15B BroadR-Reach Ethernet Upgrade	12761	Option MOST	12813	Option +12CAN-FD incl. acknowledgement	12811	Option Visualization incl. WLAN	12810	Option Extended Protocols	12814	Option Filter, Trigger, Classing	12815	Option GPS	12833	Option Video	12832	Option Audio	12834	Option Remote Control	
PM-200 Enhanced	13164																														
PS-0S Enhanced	13165																														
PS-1000SC Enhanced	13169																														
PS-128SI Enhanced	13467																														
PS-512SI Enhanced	13166																														
PT-15B BroadR-Reach Ethernet Upgrade	12761																														
Option MOST	12813																														
Option +12CAN-FD incl. acknowledgement	12811																														
Option Visualization incl. WLAN	12810																														
Option Extended Protocols	12814																														
Option Filter, Trigger, Classing	12815																														
Option GPS	12833																														
Option Video	12832																														
Option Audio	12834																														
Option Remote Control																															

TTTech Auto AG

Europe, Austria (Headquarters)
Phone: +43 1 585 65 38-5000

Germany
Phone: +49 841 88 56 47-0

TTTech Japan
Phone: +81 52 485-5898

TTTech China
Phone: +86 21 5015 2925-0

© TTTech Auto AG All rights reserved. All trademarks are the property of their respective holders. To the extent possible under applicable law, TTTech hereby disclaims any and all liability for the content and use of this flyer.

products@tttech-auto.com